



# CBX6 Polyclonal Antibody

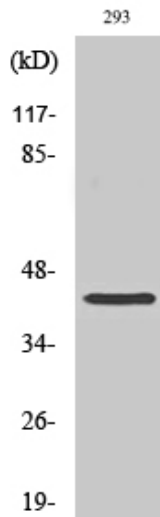
<b>Catalog No</b>	YP-Ab-01593
<b>Isotype</b>	IgG
<b>Reactivity</b>	Human;Mouse;Rat
<b>Applications</b>	WB;IHC;IF;ELISA
<b>Gene Name</b>	CBX6
<b>Protein Name</b>	Chromobox protein homolog 6
<b>Immunogen</b>	The antiserum was produced against synthesized peptide derived from human CBX6. AA range:10-59
<b>Specificity</b>	CBX6 Polyclonal Antibody detects endogenous levels of CBX6 protein.
<b>Formulation</b>	Liquid in PBS containing 50% glycerol, 0.5% BSA and 0.02% sodium azide.
<b>Source</b>	Polyclonal, Rabbit,IgG
<b>Purification</b>	The antibody was affinity-purified from rabbit antiserum by affinity-chromatography using epitope-specific immunogen.
<b>Dilution</b>	WB: 1/500 - 1/2000. IHC: 1/100 - 1/300. ELISA: 1/20000.. IF 1:50-200
<b>Concentration</b>	1 mg/ml
<b>Purity</b>	≥90%
<b>Storage Stability</b>	-20°C/1 year
<b>Synonyms</b>	CBX6; Chromobox protein homolog 6
<b>Observed Band</b>	44kD
<b>Cell Pathway</b>	Nucleus . Chromosome . Uniformly distributed in the nucleoplasm (PubMed:18927235). Localizes to the inactivated X chromosome in females (By similarity). .
<b>Tissue Specificity</b>	Lung,Uterus,
<b>Function</b>	function:Involved in maintaining the transcriptionally repressive state of genes. Modifies chromatin, rendering it heritably changed in its expressibility.,similarity:Contains 1 chromo domain.,subunit:Component of the chromatin-associated polycomb complex (PcG).,
<b>Background</b>	function:Involved in maintaining the transcriptionally repressive state of genes. Modifies chromatin, rendering it heritably changed in its expressibility.,similarity:Contains 1 chromo domain.,subunit:Component of the chromatin-associated polycomb complex (PcG).,
<b>matters needing attention</b>	Avoid repeated freezing and thawing!



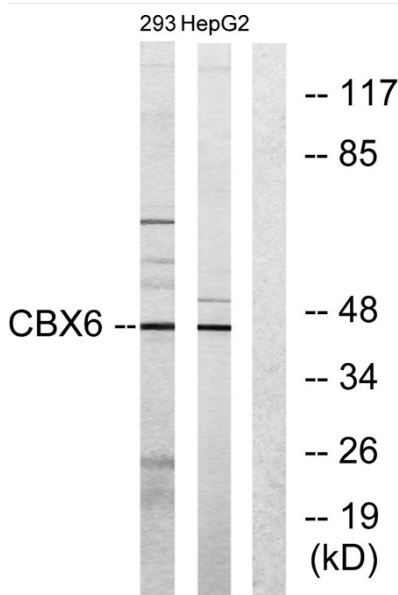
## Usage suggestions

This product can be used in immunological reaction related experiments. For more information, please consult technical personnel.

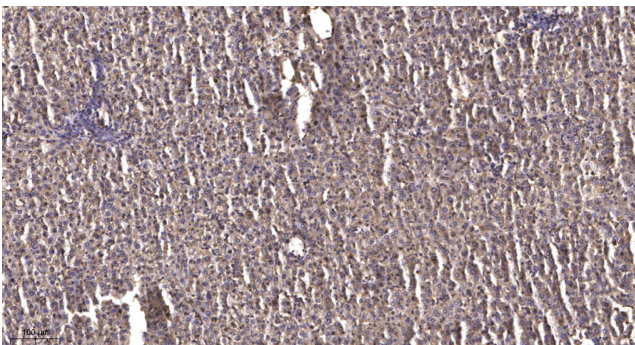
## Products Images



Western Blot analysis of various cells using CBX6 Polyclonal Antibody cells nucleus extracted by Minute TM Cytoplasmic and Nuclear Fractionation kit (SC-003, Invent biotech, MN, USA).



Western blot analysis of lysates from 293 and HepG2 cells, using CBX6 Antibody. The lane on the right is blocked with the synthesized peptide.



Immunohistochemical analysis of paraffin-embedded human liver cancer. 1, Antibody was diluted at 1:200 (4° overnight). 2, Tris-EDTA, pH 9.0 was used for antigen retrieval. 3, Secondary antibody was diluted at 1:200 (room temperature, 45 min).